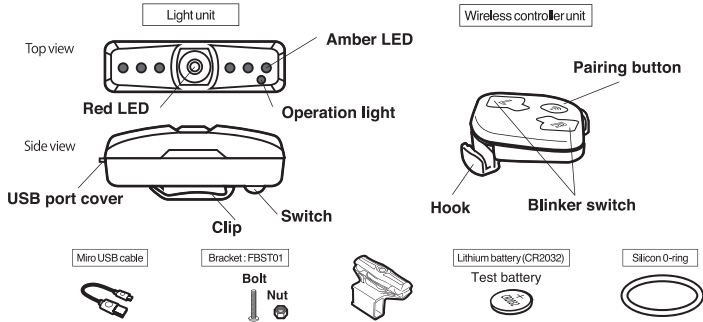


TL600MU

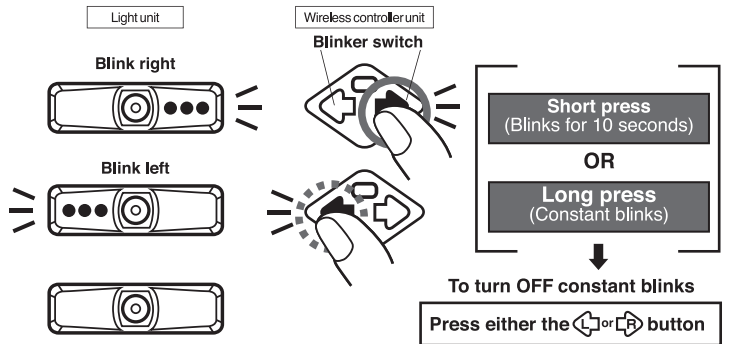
SEQUENTIAL LED TURN SIGNAL

Read this manual thoroughly before use.

- Spec.
- Red LED x1 • Amber LEDx6
 - Battery : Li-ion polymer battery 320 mAh / Approx. 300~500 times charges and discharges
 - Wireless controller : Lithium battery (CR2032), wireless distance up to approx. 10M
 - Water resistant



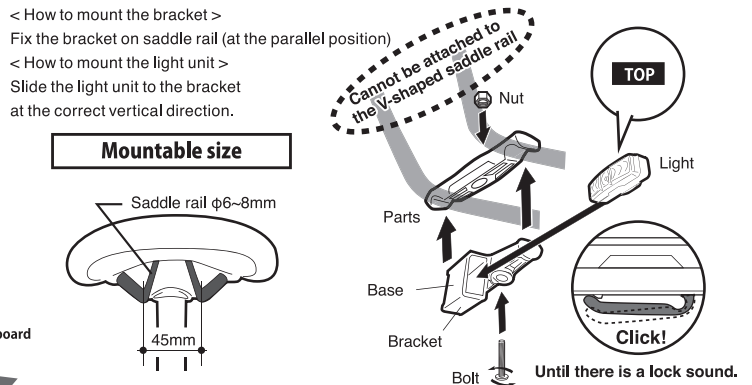
[3] HOW TO OPERATE THE WIRELESS CONTROLLER



CAUTION Please check the direction movement of the wireless controller and light units are the same before use.

[4] HOW TO MOUNT THE BRACKET

CAUTION • Please make sure the light unit must mount at correct vertical direction.
• Please check the screw tight.
• Please set the bracket at parallel rail.



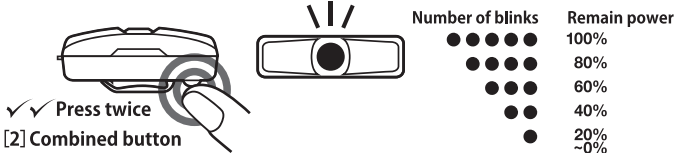
HOW TO MOUNT THE WIRELESS CONTROLLER

Mountable size 25.4~31.8mm

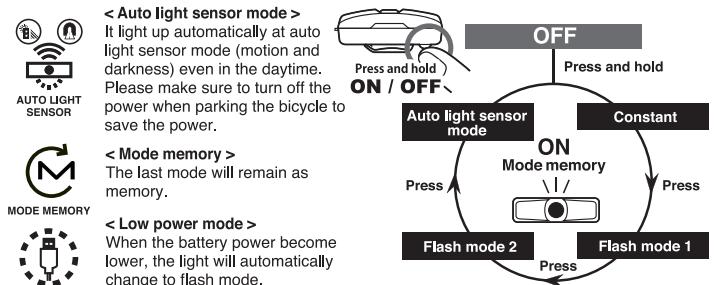


[5] HOW TO CHECK THE POWER

While at OFF mode, press the button twice, and the center light will blinks. The battery level shows by the number of blinks.



[6] FUNCTION



2.4GHz wireless system
This product adopts the 2.4GHz wireless technology. This system practically eliminates interference from any external noise and cross-talk with other wireless system. However, it suffers interference in the following places or environment, which the function may change automatically.
• TV, PC, radios, motors/engines, or in cars and trains.
• Railroad crossing, and near railway tracks, around television transmitting stations and radar bases.
• Other wireless computer or digitally controlled light.
• In the Wi-Fi environment.

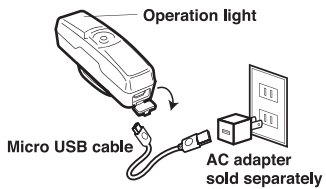
CAUTION / ATTENTION

• Avoid looking directly into the LED, it can cause eye injury. • This product is water resistant for normal daily use. Do not submerge the product in water. • Do not store within reach of children. • Do not operate the ON/OFF switch while riding. • Do not towards the USB outlet to UP side. • Do not forget to turn off after use. • Long parking conditions, please remove the unit to protect the light. • Temperature range : -10 to 40°C • Design specifications, etc., Subject to change without notice for improvement. • Please confirm the battery remaining amount before use. • This product is only to increase the safety for the riders, however, riders needs to visually check the corners themselves even using this product.

[1] INSTRUCTION

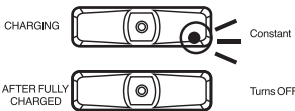
HOW TO CHARGE THE BATTERY

REMOVE THE INSULATION SHEET ON THE WIRELESS CONTROLLER

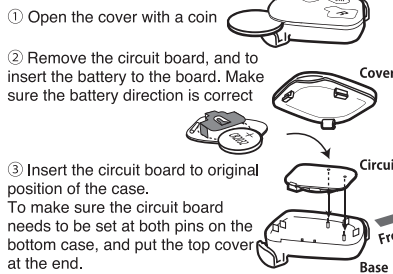


① Remove the USB port cover, and plug the Micro USB cable to charge.

② While charging the power the operation light will stays constant, Turns OFF after charging is complete.

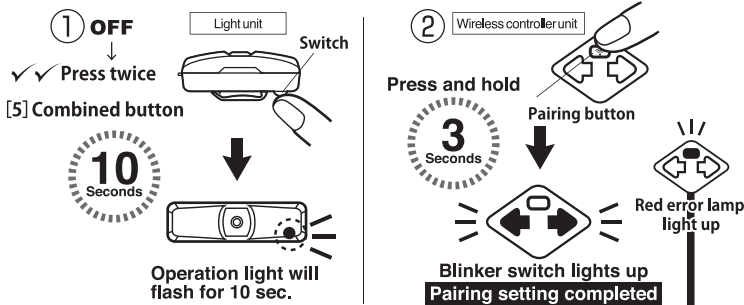


HOW TO INSTALL BATTERY



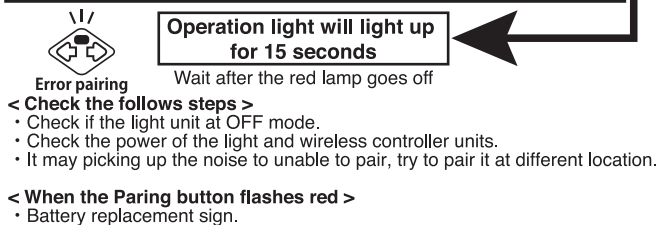
① Open the cover with a coin
② Remove the circuit board, and to insert the battery to the board. Make sure the battery direction is correct
③ Insert the circuit board to original position of the case. To make sure the circuit board needs to be set at both pins on the bottom case, and put the top cover at the end.

[2] HOW TO PAIRING



① When the light unit at OFF mode, press the switch twice, and the operation light will flashes for 10 seconds.
② While the operation light is flashing, press and hold on the pairing button on the wireless controller, after 3 seconds the both blinker switch on the wireless controller will lights up, and the pairing setting completed.

When the pairing felled



< Check the follows steps >
• Check if the light unit at OFF mode.
• Check the power of the light and wireless controller units.
• It may picking up the noise to unable to pair, try to pair it at different location.
< When the Paring button flashes red >
• Battery replacement sign.

Once the initial pairing is set it, cannot be unpaid, unless it is set to another units.

GROUP PAIRING FUNCTION

< How to setup group pairing >
• Turned OFF all the light units it needs to pair, and push all the light units button twice. While the operation lights are blinking, press the pairing button on the wireless controller for group pair.
• When pairing to other units, it automatically unpaid with the previous units.
• Only the single wireless controller can operate to all the light units.
• Wireless distance can be reach up to approx. 10 Meters.
• The wireless will automatically reconnect even it went disconnected