

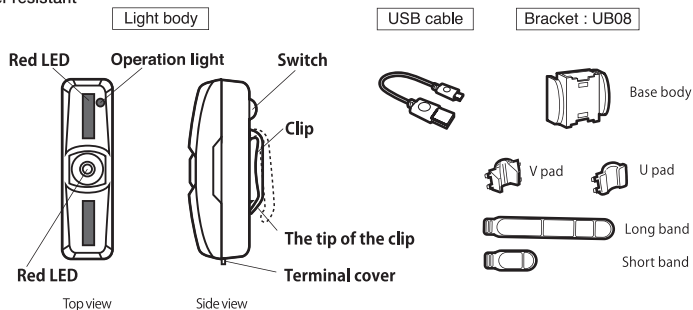
# BL600MU

BUILT-IN ACCELEROMETER FOR BREAKING

Spec.

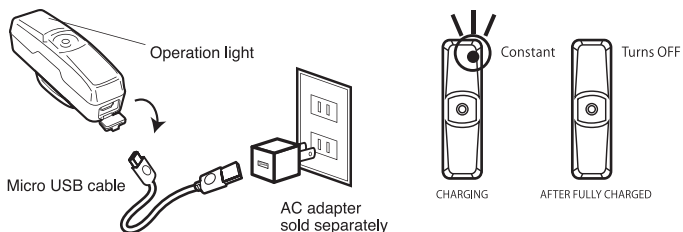
- RED LED x 1 / LED chip (COB)
- Battery : Li-ion polymer battery 320 mAh / Approx. 300~500 times charges and discharges
- Brake sensor : "G" sensor (Accelerometer)
- Water resistant

Read this manual thoroughly before use.



## [1] HOW TO CHARGE THE BATTERY

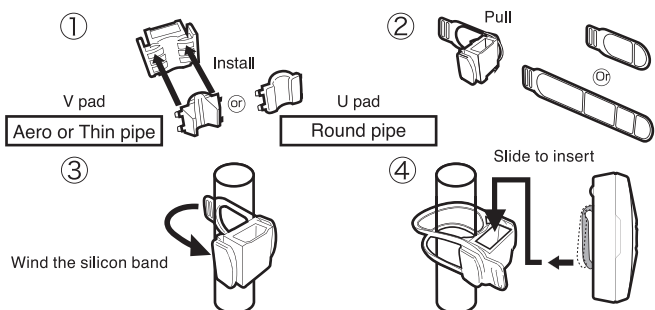
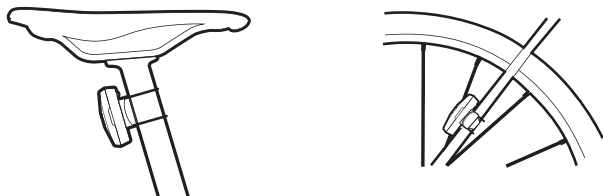
- Remove the USB port cover, and plug the Micro USB cable to charge.
- While charging the power the operation light will stays constant, Turns OFF after charging is complete.



## HOW TO MOUNT THE BRACKET

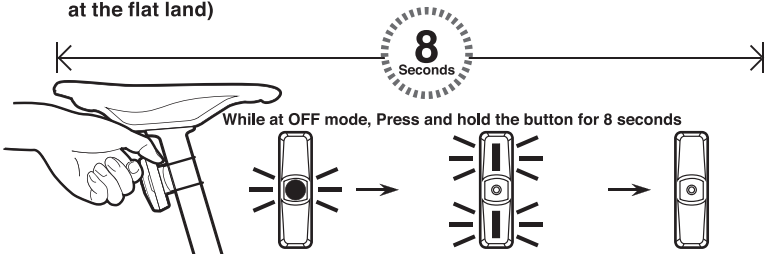
For seat post

For seat stay



## INITIAL SETTING

Set the Light unit to the bicycle before setting. Push and hold the button for 8 seconds at OFF mode, the light unit will automatically measure the angle to setup. (Make sure when setup the angle measurement, the bicycle must be set at the flat land)

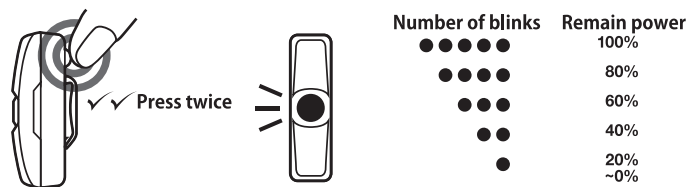


- Push and hold the button and the center LED will lights up.
- While pressing the button all the LED will lights up.
- After 8 sec. all LED will shut off and initial setting completed.

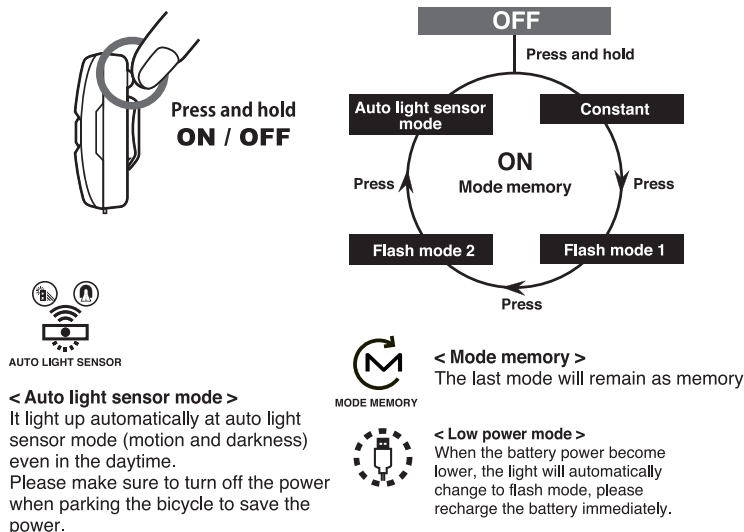
- Make sure when set the initial settings, the bicycle must be set at the flat land, if setting on an inclined surface the brake sensor may not work properly.
- If you want to change the mounting position or angle, you will need to reset the initial settings.

## [2] HOW TO CHECK THE POWER INDICATOR

While at OFF mode, press the button twice, and the center light will blinks. The battery level shows by the number of blinks.

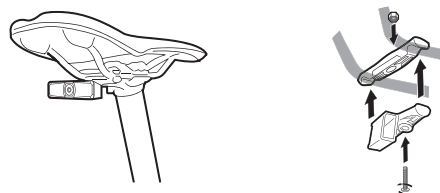
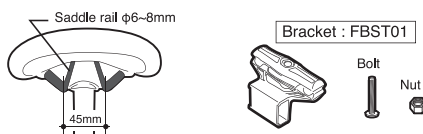


## [3] FUNCTION



## [4] OPTIONAL BRACKET

Can be attached to the saddle rail.



Can be installed even when there is no seat space.

## [5] OPTIONAL REPAIR PARTS

ZP-UB08 (Basic / All parts)	ZP-UB08 - A TYPE (Basic / Short band type)	ZP-UB08 - B TYPE (Basic / Long band type)
V pad		
Base body	Base body	Base body
	V pad	V pad
	U pad	
Short band	Short band	
Long band		Long band

## CAUTION / ATTENTION

- Avoid looking directly into the LED, it can cause eye injury.
- This product is water resistant for normal daily use. Do not submerge the product in water.
- Do not store within reach of children.
- Do not operate the ON/OFF switch while riding.
- Do not towards the USB outlet to UP side.
- Do not forget to turn off after use.
- Long parking conditions, please remove the unit to protect the light.
- Temperature range : -10 to 40°C
- Design specifications, etc., Subject to change without notice for improvement.
- Please confirm the battery remaining amount before use.
- This product is only to increase the safety for the riders, however, riders needs to visually check the corners themselves even using this product.